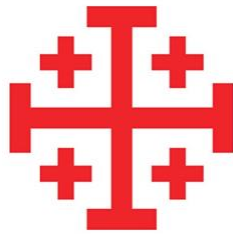




GRAND JUNCTION ANGLICAN MISSION



Let us pray.

Almighty God our Savior, you desire that none should perish, and you have taught us through your Son that there is great joy in heaven over every sinner who repents:

Grant that our hearts may ache for a lost and broken world. May your Holy Spirit work through our words, deeds, and prayers, that the lost may be found and the dead made alive, and that all your redeemed may rejoice around your throne; through Jesus Christ our Lord. **Amen.**



After this the Lord appointed seventy-two others and sent them on ahead of him, two by two, into every town and place where he himself was about to go. And he said to them, “The harvest is plentiful, but the laborers are few. Therefore pray earnestly to the Lord of the harvest to send out laborers into his harvest.

— Luke 10:1-2

WHY CHURCH PLANT IN GRAND JUNCTION?

- People are separated from God, now and forever, without Jesus and His Church, and socially our country is isolated and divided. The need is great for the Good News of Jesus and a revival of Word & Sacrament churches!
- Further, the Lord Jesus calls us to plant churches! Church planting mission is an essential part of the Gospel: Jesus ascended into heaven and sent his Spirit to empower His Body, the Church, to make disciples by baptizing and teaching to the ends of the earth. Planting is also the best way to raise up new leaders and to form and revitalize missional identity in sending churches.
- Why Grand Junction, CO? I have a burning conviction to see people come to know Jesus and his Church, and there is no Anglican church serving the 162k people of Mesa County, 63% of whom are not “religious adherents.” We also feel called to start a planting network to reach the 1 million people that will live on the Western Slope by 2050 in partnership with other Anglicans in the region.
- Signs of the Spirit’s Work: The ACNA Yellowstone District wants to sponsor the mission, the place is a good fit for our family, and they have called us to go plant. We’ve made three vision trips this year and have come to love the place and the people. We’ve begun to connect with a couple family units that are open to joining, local pastors offering encouragement, and another church planting family with kids who wants to be our friends.

HOW CAN YOU JOIN US IN THIS MISSION?

1. **Pray Luke 10:2 every day** for Grand Junction:
“The harvest is plentiful, but the laborers are few.
Therefore pray earnestly to the Lord of the harvest to
send out laborers into his harvest.”
2. **Commit to a financial gift** to help us meet our launch
goal or become a monthly financial partner.
Our launch goal is for partners to commit to \$9000 in
monthly support for the plant.
([Online gifts](#) should be designated “Matt Traylor
Grand Junction” at northernrockiesanglicans.com)
3. **Join our online prayer team** that will meet monthly to
pray for the launch team, fundraising, church
partnerships, and new connections.
4. **Connect us with other potential partners** or anyone
who might join the church plant!



Jesus said to them, “But you will receive power when the Holy Spirit has come upon you, and you will be my witnesses in Jerusalem and in all Judea and Samaria, and to the end of the earth.”

- Acts 1:8

GET TO KNOW GRAND JUNCTION

- Grand Junction is the crucial metro hub for all of Western Colorado as the largest city between Salt Lake City and Denver, and there are no Anglican churches who actively planting churches between these two cities.

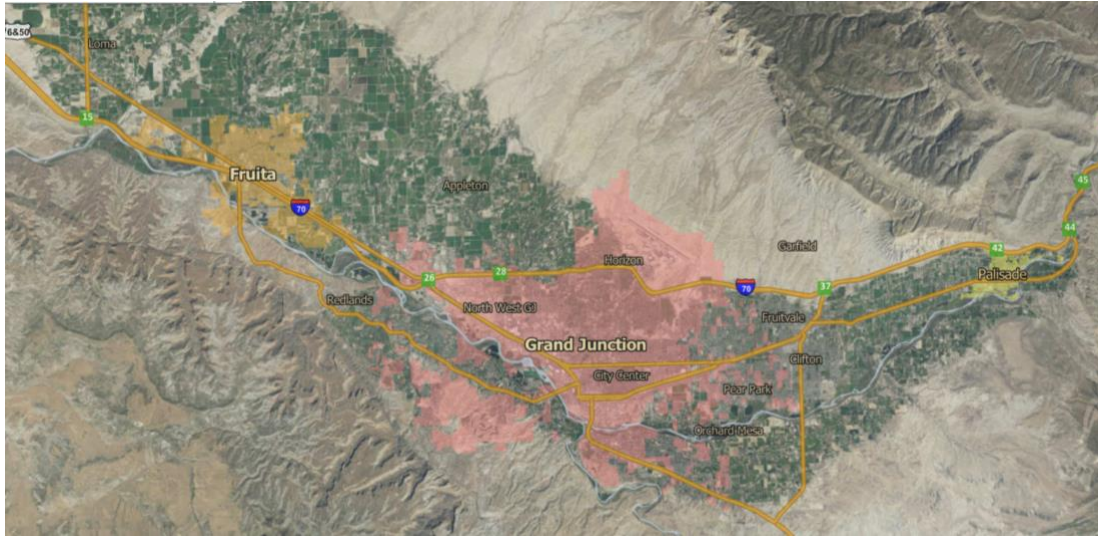


- The city is known for being a small city with a slower pace of life that enjoys abundant eco-tourism and outdoor recreation. A significant population boom has begun as people move there for quiet affordable living (remote workers) or retirement. Business leaders are excited about the population and economic growth. The university is a point of pride and attracts students from across the region, especially locally and from Denver.



- There are problems: people feel a deep sense social loneliness and isolation, there's a significant homeless community, local jobs for CMU graduates is a challenge (outside of healthcare), and there's growing tension between long-term residents and affluent urbanites moving in from the outside.
- If we don't plant a church in this city and plant churches on the Western Slope, not only will we be disobedient to God's call, but the people we don't reach will continue living separated from God and one another, resulting in greater isolation and division.

Demographics



- Mesa County will grow 30% in population in next 25 years (162k to 221k)
- Mostly white (20% Hispanic)
- Average Income: \$83k
- Population by age (Millennials and kids are ~40% of the population)
 - 0-14 16%
 - 15-24 12%
 - 25-44 27%
 - 45-64 24%
 - 65+ 21%

Biggest Mosaic Groups

- Singles and starters (17%)
 - 25-30 yr, \$50-75k
 - Average residence 1-3 years
 - Rental housing, single adults (10% with kids)
 - Politically disengaged, foodies, tech savvy
- Golden Year Guardians (14%)
 - 76+ yr, \$35-50k
 - Retired, homeowners
 - Health conscience, tech novice
- Autumn Years (9%)
 - 66-75 yrs, \$50-75k
 - Retired, homeowners, financially secure
- Rural lifestyle, community roots, outdoor hobbies, tech novice
- Blue Sky Boomers (8%)
 - 51-65 years, \$50-75k
 - Near retirement, modest homeowners
 - Rural lifestyle, blue collar jobs, outdoor recreation, tech novice
- Thriving Boomers (7%)
 - 51-65 years, \$75-100k
 - Upper-middles class, near retirement, married homeowners
 - Suburban, nature enthusiasts, tech apprentice

Ministry Plan

Before moving to GJ

- Objectives
 - Develop prayer team (25 people that will pray Luke 10:2 every day for Grand Junction and who will meet monthly to pray for the launch team, fundraising, church partnerships, and new connections)
 - Find financial partners for the plant (budget goal is \$150k/yr for 5 years), consult with Fr James Linton to develop a plan
 - Visit CO regional churches for partnership and support raising
 - Two GJ follow-up trips to build relationships with local church leaders, meet with prospective “called” families and follow-up with new contacts
 - Make two Yellowstone Missionary District connection trips
- Benchmarks: secure a planting coach, establish and raise funds for a 5-year financial plan
- Transition steps: have a final sending service at CCA, move to GJ, get family settled, begin to engage in community life

Initial Gathering (Up to 10 Families)

- Personal Objectives
 - Monthly meetings: Bp Mark (direct report), coach, spiritual director, other clergy
 - Create church plant strategy proposal
 - Keep a journal along the way capturing your observations, the potential underlying values, and how they might respond with Christ’s love in worship, formation or mission (See below for types of questions to be asking)
 - Walking the neighborhoods and talking to residents and business owners
 - Meet key leaders and determine city’s needs and assets
 - Create and keep track of budget with Yellowstone admin oversight
 - Create Time Allotment Form
 - Getting to know people at “town centers”
 - Meeting 5-7 new families per week
 - Meeting leaders: civic, church/ministry, schools, etc
- Team Objectives
 - Prayer walks across the city (large time allotment)
 - Solidify relationships with other committed families and encourage giving
 - Gather list of possible contacts and invite them to join
 - Set collective goal of having x# of gathering conversations about the church plant with family, friends, neighbors, and strangers. Keep a tally! (i.e. 300 conversations)
 - Plan the logistics for a formal Interest and Vision Meeting
 - Create basic website and invite card that answer questions about the church plant for team to use in gathering conversations
 - Other possible objectives: types of outreach, catechesis, contacts with other pastors, held a conversation about stance on homosexuality, music person by time of launch, number of kids or young families
 - Determine outreach ministries (missional-incarnational approach), e.g. Catechesis of the Good Shepherd, Theology of Nature reading group

- Benchmarks
 - Assemble a group of 10 families (a single person counts as a family) who've given verbal commitment to join a "Launch Team" and 9/10 are inviting people to join
 - Establish a small group
- Transition Step: establish and commission a "Launch Team", where each family commits to the plant for one year.

Launch Team (Up to 20 families)

- Structure: Begin meeting every week for dinner, Evening Prayer, catechesis (Acts 2:42-47, creed, etc) and strategy sessions (Vision Casting, Report on Gathering progress, assignments to be more intentional in their life with others.)
- Team Objectives
 - Culture Building
 - Establish the "Why" for the church plant.
 - Train each Launch Team member how to share their story in a way that connects with the church plant.
 - Develop a mission DNA based on the Core Values through discussion and training exercises.
 - Begin some vision casting exercises to flesh out some particulars on how the church plant will look and be like. (i.e. Church Name, Gathering Ministries, Life Together, etc.)
 - Gathering
 - The Launch Team would start a Gathering Ministry (i.e. Alpha, Theology on Tap, etc.) and plan and execute one Gathering Event.
 - The Launch Team would plan and execute two Mercy Outreaches.
 - Set collective goal of hosting x# of unchurched, dechurched, or underchurched people/families in Launch Team member homes. (i.e. 30)
 - Develop more connecting strategies: neighborhood outreach, block parties, prayer walks
 - Set collective goal of inviting x# of people/families to small group or gathering (i.e. 100)
- Benchmarks
 - Assemble a group of 20 families who are giving and 9/10 are inviting people to join
 - Establish a second small group
- Transition Steps:
 - Establish professional and independent website, logo, and Facebook page.
 - Pledge Drive with minimum goal of 1st year of Planter's Stipend

Pre-Launch (Up to 25 families)

- Team Objectives
 - Plan and appoint team leaders for Sunday service ministries, e.g. music, nursery, liturgy guild, ushers, etc.
 - The whole Launch Team will start meeting all together in one place every Sunday morning or evening. The Liturgy will be simple and a combination of Morning/ Evening Prayer and Holy Communion. These meetings will be welcoming to outsiders, but not publicized.
 - After the Liturgy, the whole Launch Team will meet to discuss a variety of things pertaining to the Mission Launch. (i.e. Develop Core Values, Mission, and Vision Statement, Logo, Practice inviting and/or sharing personal story, etc.)
 - About once per month, the Launch Team will hold “Preview Services”.
- Benchmarks:
 - Assemble a group of 25 families who are giving and 9/10 are inviting people to join
 - Establish a third small group
- Transition Steps:
 - Invest in promo video (costs approximately \$2k)
 - Set Mission Launch date (if the Launch Team has decided to keep meeting on Sunday evenings during the Pre-Launch phase, then the Mission Launch would mark a transition to Sunday mornings.
 - Coordinate with Bishop and Canon, who would need to be present for the Mission Launch.
 - Leading up to the launch, have a heavy publicity campaign from the whole Launch Team. (i.e. handing out flyers, inviting friends to celebrate with them on the Mission Launch, etc.)

Mission

- Team Objectives
 - Leading up to the launch, have a heavy publicity campaign from the whole Launch Team. (i.e. handing out #yers, inviting friends to celebrate with them on the Mission Launch, etc.)
 - Set up church organizational structure: By-Laws, Legal structures, accounting structures, etc (Ref [DRM Church Plant Manual](#), “Setting up a Church”)
 - Solidify Baptized Membership and Transfer Process
 - Several months after the Mission Launch, aim to have a large first class of Confirmands through a Cohort.
- Benchmark: Public worship on Sunday mornings.

Appendix: Why Start New Churches?

Some Bad Reasons

- To Expand My Favorite Franchise of Church or to Innovate
- Entrepreneurship, Personal Ambition, or Self-Seeking Glory

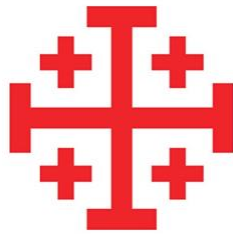
The Mission of Jesus

- Jesus came to save humanity from sin, death, and the devil, and to restore us all to right relationship with the Father wherein we can become the kingdom of priests that worship God, bless our neighbors, and cultivate the world.
- Jesus' ascension didn't mark the end of Jesus' work of salvation, but the expansion of his work to ends of the earth through us, His Church. His mission continued with his Apostles and their successors led by the Holy Spirit who have gone throughout the world to be his representatives, his Body. The expansion of the Church is part of the Gospel! Jesus is reconciling the world to the Father through us.
- Part of the Gospel and our faithfulness to Our Lord is to follow him out into the world to plant new churches in all places and for every generation. Church planting is a response to God's call and an essential part of what it means to be the Church.

The Effectiveness of Starting New Parishes

(from Tim Keller, "[Why Plant Churches?](#)")

- We Want to Be True to the Biblical Mandate
 - Jesus' Essential Call was to Plant Churches (The Great Commission)
 - Paul's Whole Strategy was to Plant Churches (Romans 15:17-20)
 - It's the essential result of the Church's Worship (Acts 2:42-48)
- We Want to Be True to the Great Commission
 - New Churches Best Reach New Generations, New Residents, and New People Groups
 - New Churches Best Reach the Unchurched—Period
- We Want to Continually Renew the Whole Body of Christ
 - New Churches Bring New Ideas to the Whole Body
 - New Churches Identify Creative, Strong Leaders for the Whole Body
 - New Churches Challenge Other Churches to Self-Examination
 - New Churches May be an "Evangelistic Feeder" for a Whole Community



Let us pray.

Lord Jesus Christ, you stretched out your arms of love on the hard wood of the Cross that everyone might come within the reach of your saving embrace: So clothe us in your Spirit that we, reaching forth our hands in love, may bring those who do not know you to the knowledge and love of you; for the honor of your Name. **Amen.**